



# Gold Leaf German Sepp Leaf Special



Sepp Leaf Special gold leaf average thickness is 0.3 to 0.8 microns.



Fine Gold 24kt  
SL24.00DS AW=27g  
100% GOLD



Platara 24kt  
SL24.00PL AW=28g  
99% GOLD-1% PLATINUM



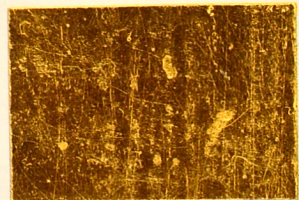
Platara III 24kt  
SL24.00PP AW=27g  
97% GOLD-3% PALLADIUM



Rosa 23 $\frac{3}{4}$ kt ◆  
SL23.75DR AW=23g  
98.5% GOLD+SILVER&COPPER



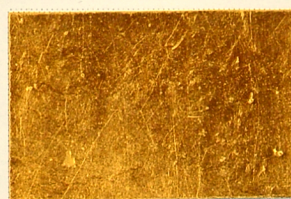
Antique 23 $\frac{1}{2}$ kt ◆  
SL23.50DA AW=22g  
98% GOLD+SILVER&COPPER



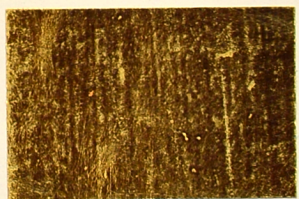
Special 23kt ◆  
SL23.00DS AW=21g  
96% GOLD+SILVER&COPPER



Orange 22 $\frac{1}{2}$ kt  
SL22.50DO AW=19g  
94% GOLD+SILVER&COPPER



Special 22kt  
SL22.00DS AW=19g  
92% GOLD+SILVER&COPPER



Lemon 21 $\frac{1}{2}$ kt  
SL21.50LE AW=19g  
89.50% GOLD-10.50% SILVER

Loose leaf oil gilded on white paper. The ◆ indicates leaf that is also available in patent form.  
AW = Average total weight (gold + alloy) indicated in grams per 1000 leaves.